

---

## Release Notes

**Product:** PinPoint version 4.2.0

**Date:** February 10th, 2026

**From:** Reality Capture Software Product Management

### Release of PinPoint version 4.2.0



# PINPOINT

POINT CLOUD REGISTRATION AND MODELLING SOFTWARE

This document contains important information about the desktop software PinPoint version 4.2.0.

You can now download the new software installer from myWorld Customer Portal:

<https://myworld-portal.leica-geosystems.com>

and PinPoint website:

<https://leica-geosystems.com/products/laser-scanners/software/pinpoint>

## WHAT'S NEW

### Version 4.2.0

#### New:

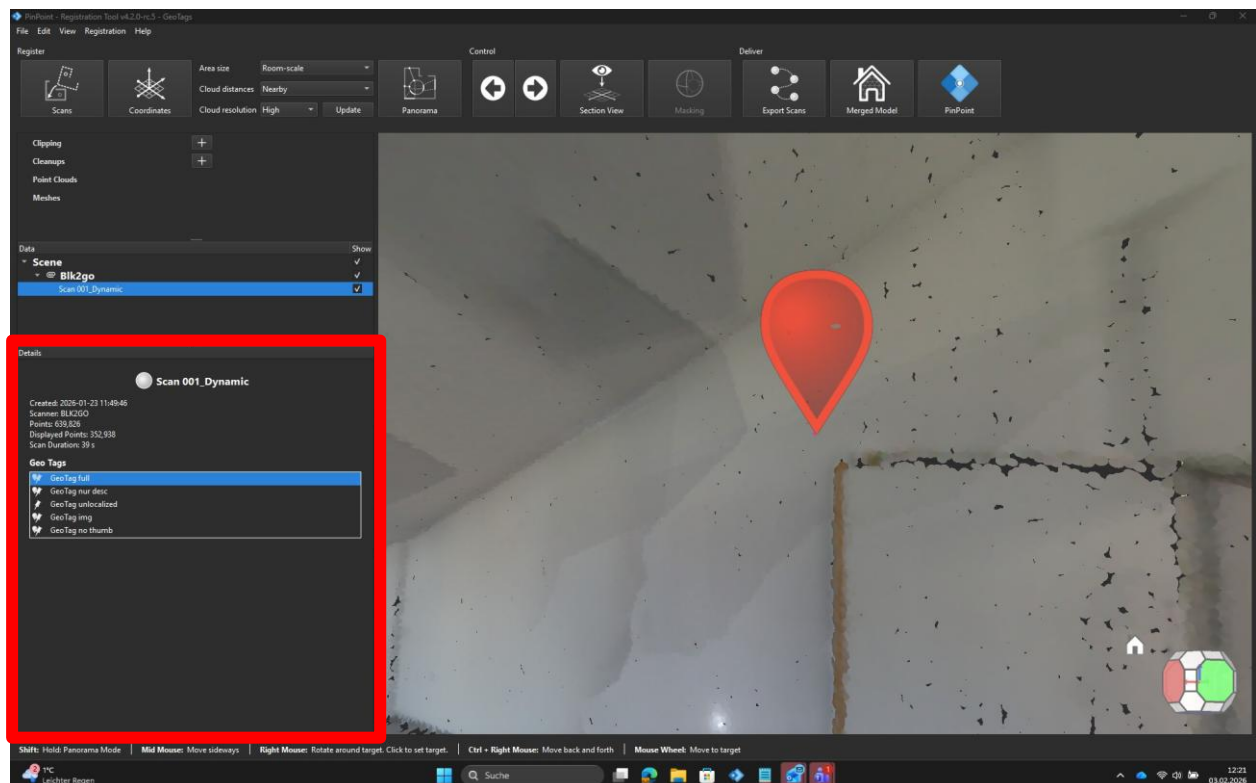
- Inclusion of the new GeoTag format compatible with Cyclone Field360 v6.2
- New details widget for scans:
  - Date, number of points, Trajectory length (for kinematic scanners), device name
- Reduced memory consumption when colorizing point clouds
- Improved automatic white balance; device specific white balance

#### Bugfixes:

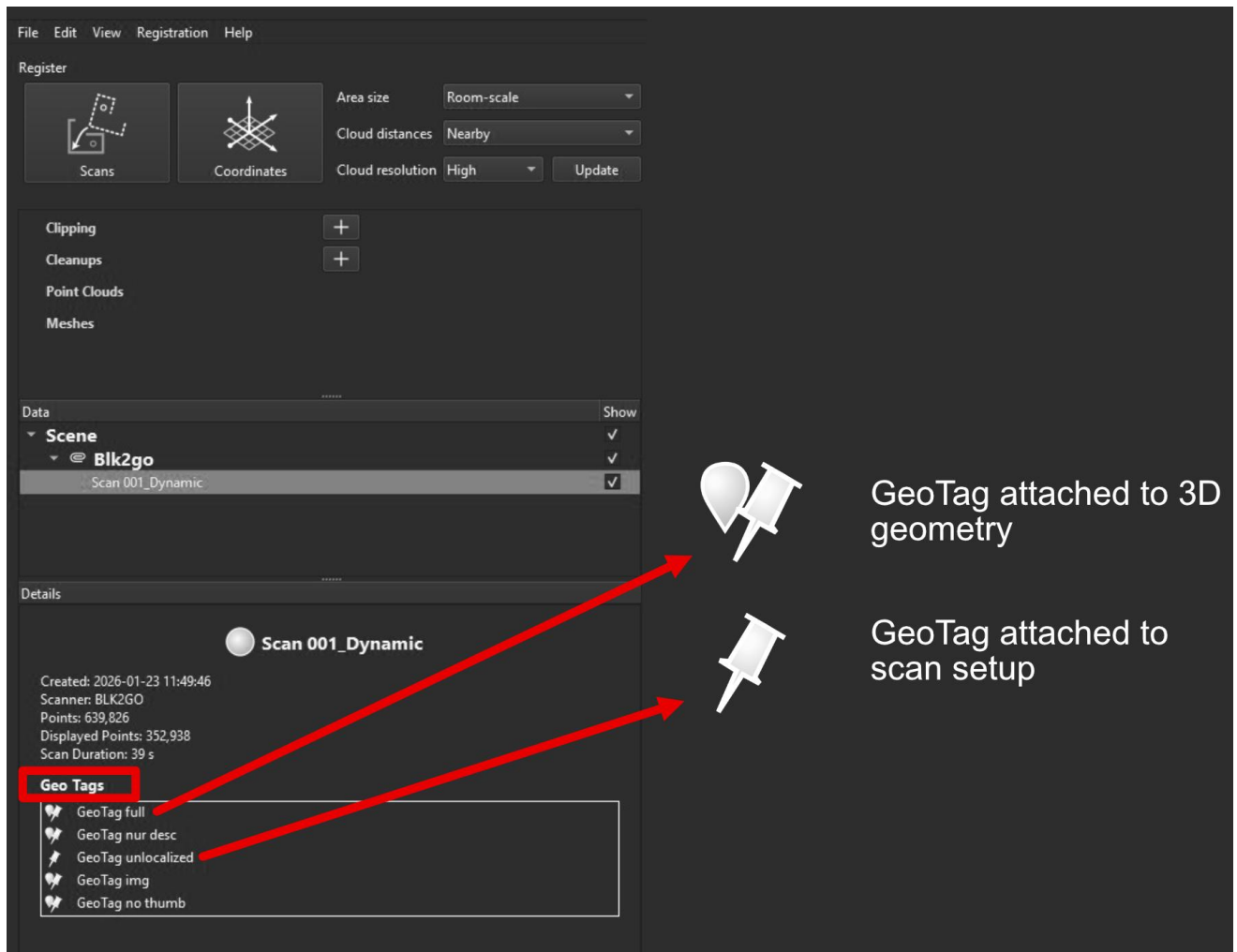
- CPU incompatibility with older generation intel Xeon preventing PinPoint to start.
- Resolved an issue where the georeferencing workflow could cause application crashes.
- Fixed issues in the workflow for registering external 360° images, where toggling between 2D and 3D using the space bar behaved inconsistently and synchronization between the image and 3D position could result in misplaced 3D positions.
- Improved CLM logging with more detailed information to aid in diagnosing licensing issues.

A detailed description of the new features and improvements is provided below.

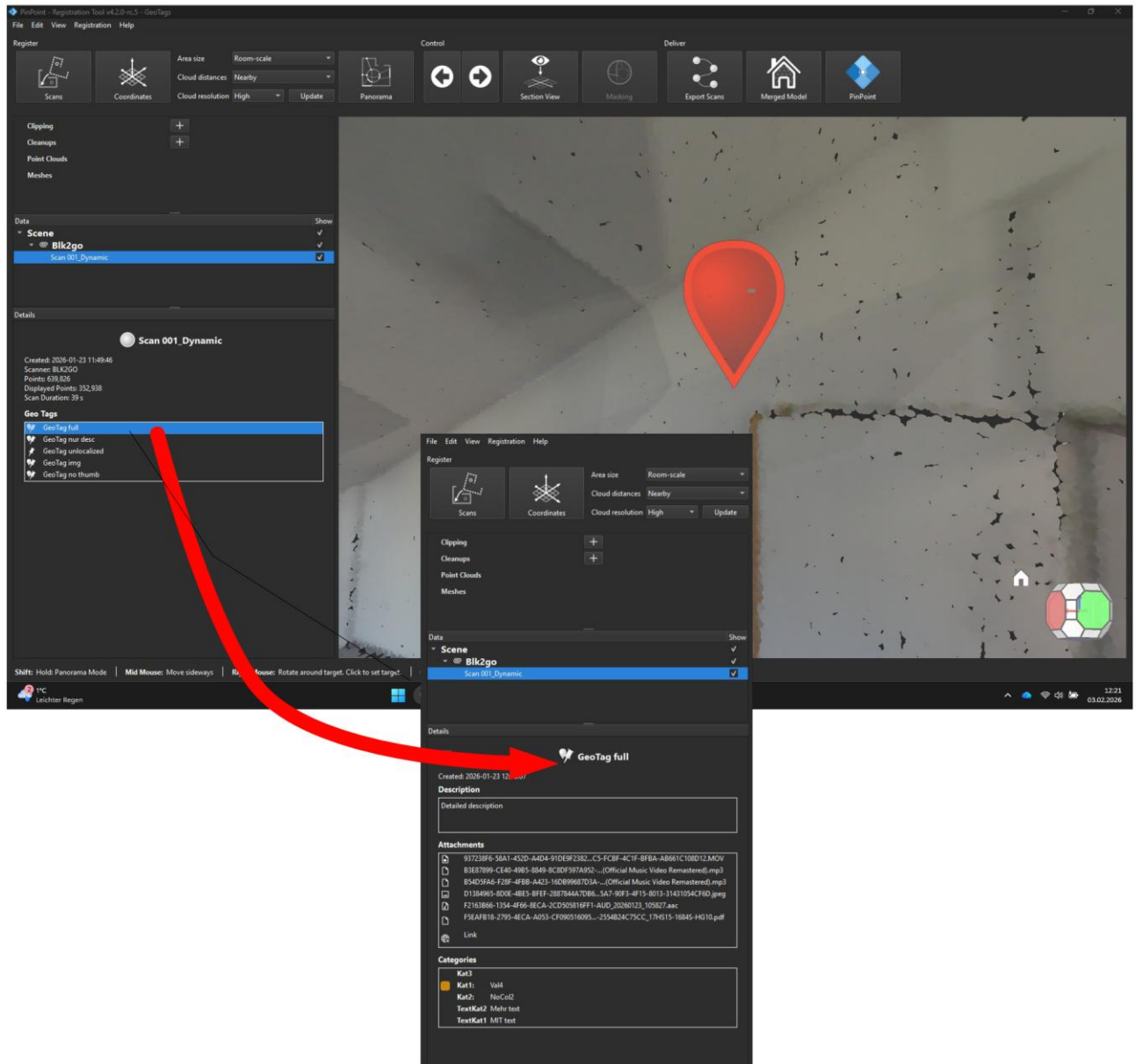
Each 3D scan position (or 3D trajectory) now includes a dedicated detail widget displayed in the lower-left corner. The widget presents key metadata such as acquisition time, number of 3D points, trajectory length, and related information.



Additionally, the details widget will list the new, enhanced GeoTags created during scan within the Cyclone Field 360 app.



Selecting a GeoTag reveals its details, including the description, attached files, and associated categories.



## CONTACT SUPPORT

In need of help? Get in contact with the technical support team of your region using the contact support form available at BLK Support website [here](#).

For more information about PinPoint please refer to the User Manual (User Manual) and the PinPoint website: <https://leica-geosystems.com/products/laser-scanners/software/pinpoint>.